



# TOWN OF SCHERERVILLE

PUBLIC WORKS DEPARTMENT

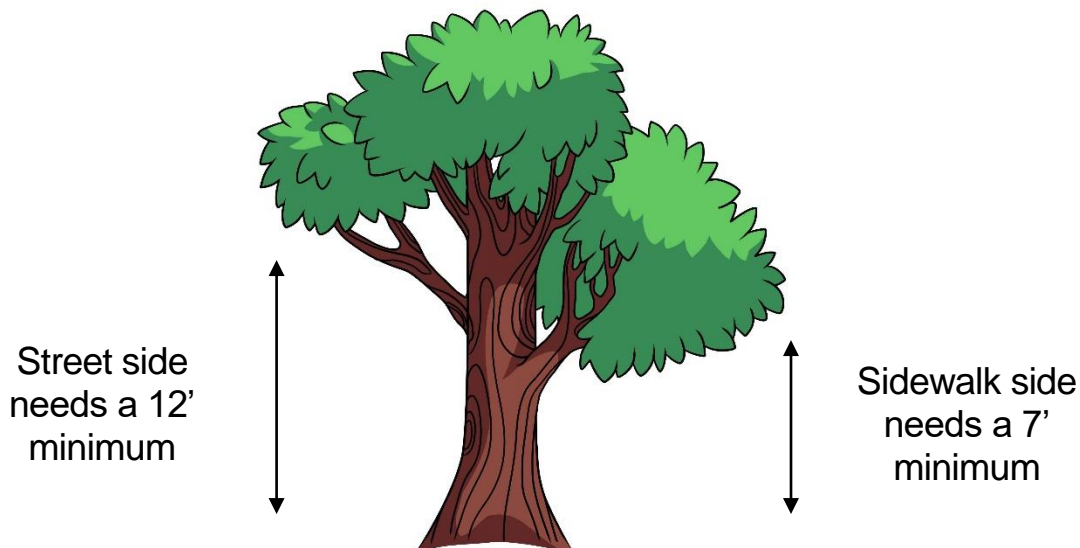
DIVISIONS OF:  
WATER/SEWER  
STREETS  
STORMWATER MANAGEMENT

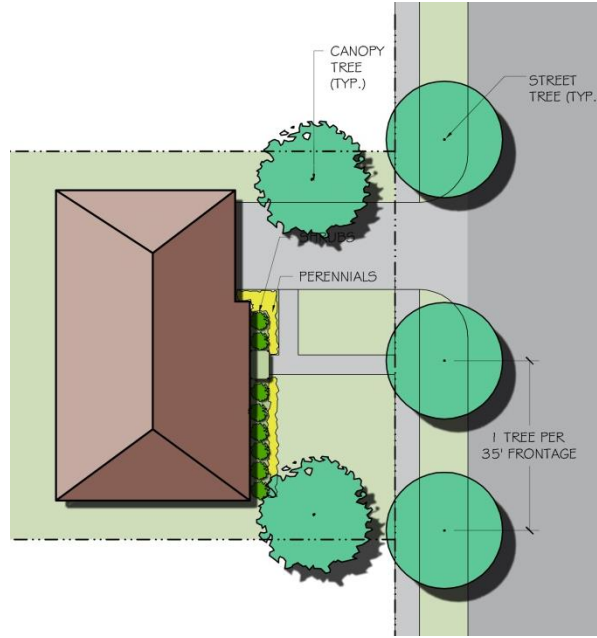
10 EAST JOLIET STREET • SCHERERVILLE, IN 46375  
PHONE: (219) 322-6688  
PHONE: (219) 322-5486  
FAX: (219) 864-1628  
WWW.SCHERERVILLE.ORG

## LANDSCAPING AND TREES IN THE PARKWAY

Town of Schererville Ordinance Number 2004, Title XVIII, regulates the maintenance and types of bushes, trees and landscaping that homeowners may have placed along the street right-of-way or in the parkway between the streets and sidewalks. These restrictions are intended to allow for free access to pedestrian and vehicle traffic using these public corridors. It is the homeowners' responsibility to maintain these items in a manner consistent with the provisions of the Ordinance. These regulations are summarized as follows:

1. On the sidewalk side, any tree or bush overhanging the sidewalk must be kept trimmed to a height of no less than seven (7) feet above the walkway.
2. On the street side, any tree or bush overhanging the street must be kept trimmed to a height of no less than twelve (12) feet above the street.
3. All trees, bushes and other landscaping must be maintained in a manner to allow for an unobstructed view of any regulatory or informational sign posted along the roadway for traffic regulation purposes. More simply stated; traffic using the streets must be able to see SPEED LIMIT, STOP, and other traffic signs from a reasonable distance as they approach them.





**Exhibit 1 - Prototype for front yard landscaping in residential districts**

(1) Front Yard Landscaping

- (1) All developments in all zoning districts shall be required to provide landscaping on front yard or the side yards, if fronting a street, prior to issuance of the occupancy permit.

(2) Residential Uses

- i. All front yards (exclusive of driveways and other permitted hard surfaces) are required to be landscaped prior to issuance of an occupancy permit. A temporary occupancy permit for up to one (1) year may be issued according to the provisions of this Ordinance.
- ii. In all residential districts, the minimum landscaping acceptable per one thousand (1,000) square feet of the front yard areas is as follows:
  - a. One (1) canopy tree, ornamental/understory, or street tree.
  - b. Four (4) shrubs or accent plants on the front elevation.
  - c. The remaining area treated with attractive ground cover(s) (e.g. lawn, perennials, and shrubs) with a deep root system that holds soil and prevents erosion.
  - d. Corner lots shall install six (6) shrubs and one (1) tree per side facing a street.
- iii. Walls that do not exceed two feet (2') in height may be permitted only when shown as an integral part of a landscape plan. Walls shall be constructed of masonry materials that complement the architecture of the primary building.
- iv. An approved landscape plan, meeting the requirements in Sections 2 and 5 of this Title, may be used in lieu of the above standards.

Above from page 18-13 of Zoning Ordinance 2004